

# 3D MAP<sup>2</sup> GENERATOR

*The  
Orange Box*



# 3D Map Generator 2 - Isometric

Extension panel for Photoshop® CS6 and CC (until Version 14.2x)

Actions set for Photoshop® CS4 and higher

The 3D-Map-Generator-2 is a complete new development of the popular „3D Map Generator Pro“. Now it is possible to determine the size of the 3D-Map by yourself. The isometric orientation of the 3D-Maps offers new possibilities in usage and design. With the new surfaces, layer structures, ground and background effects and the Top-Layer-Designer you can design your map more individual and more detailed. And you are able to redesign it as often as you want!

## Isometric Smart Object maps

- Isometric map orientation
- 3D-Maps from every shape and any size
- Smart Object maps
- Unlimited map size
- Unlimited quantity of layers (map height)

## Map styles and backgrounds

- Layer structure with 3D effect
- Gravel and spume effect
- Map design presets
- Background presets
- Surface, side surface and background editable separately for unlimited times
- Global light function

## Top-Layer-Designer

- Perfectly aligned marks and surface objects
- Pre-built brushes and styles for streets, paths, rivers and lakes
- Unlimited editable via Smart Object

## Extra

- 20 detailed basic icons in isometric orientation
- 15 country vector shapes, 1 soccer field with field marks

## Content

<b>Tutorial video link list</b>	<b>4</b>
<b>Install the panel</b>	<b>5</b>
<b>Install the action set</b>	<b>10</b>
<b>Action set overview</b>	<b>16</b>

## Tutorial Video Link List

### PLUGIN TUTORIALS

1. Install the plugin: [http://youtu.be/GrQd\\_LZ27zw](http://youtu.be/GrQd_LZ27zw)
2. Generate a basic 3D-Map: [http://youtu.be/K9QOtsU\\_rNU](http://youtu.be/K9QOtsU_rNU)
3. Style presets and custom styling: <http://youtu.be/zD87iiP0Q4s>
4. Top-Layer-Designer: <http://youtu.be/q983bJ-HT-4>

### ACTIONS SET TUTORIALS

1. Install the actions set: [http://youtu.be/rk91\\_bHzSx4](http://youtu.be/rk91_bHzSx4)
2. Generate a basic 3D-Map: [http://youtu.be/\\_e5WZH7GHig](http://youtu.be/_e5WZH7GHig)
3. Style presets and custom styling: <http://youtu.be/oGv18lwayZk>
4. Top-Layer-Designer: <http://youtu.be/BWg26O-hX1A>

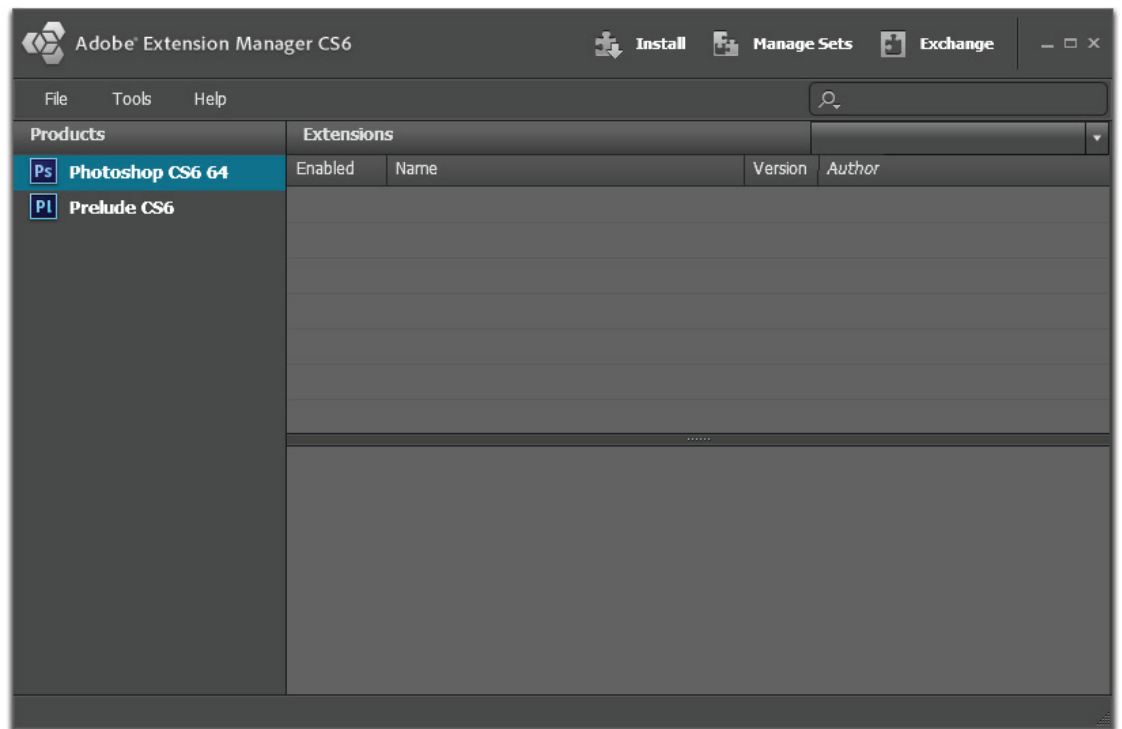


*More 3D-Map-Generator Infos,  
Tutorials and Stuff:*  
**[www.3d-map-generator.com](http://www.3d-map-generator.com)**

## Install the panel

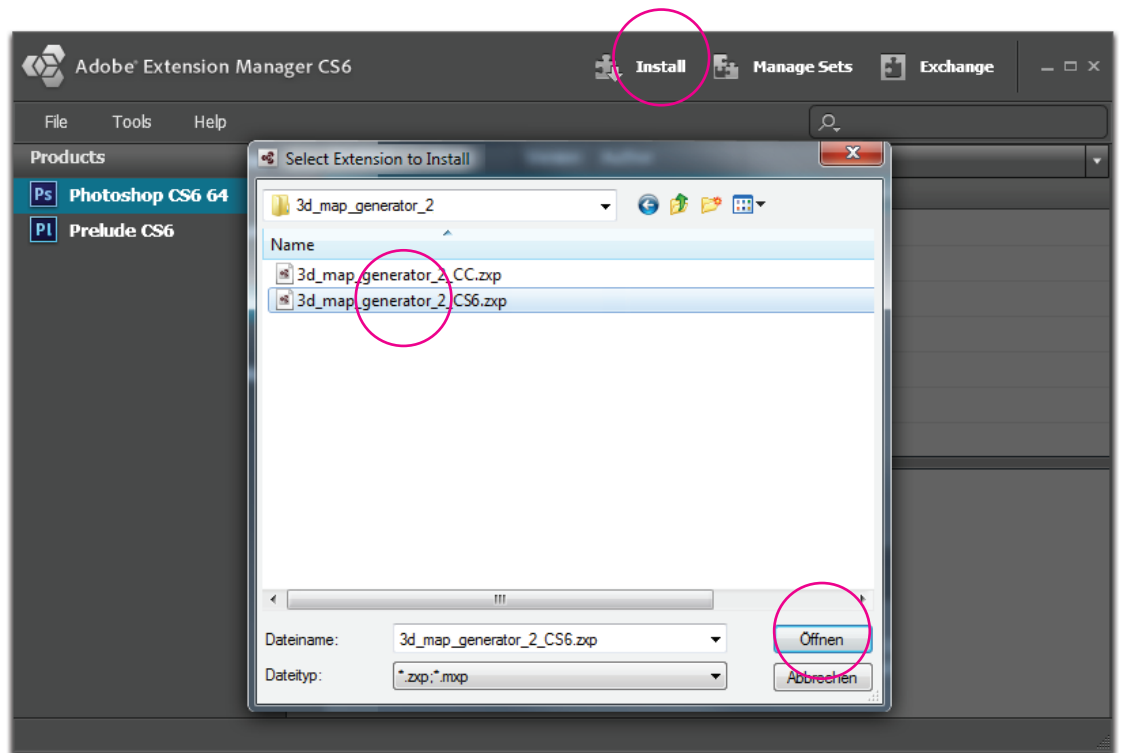
To install 3D Map Generator 2 you will need a copy of Adobe Photoshop CS6 or CC and Adobe Extension Manager installed on your computer.

1. If Photoshop is open, please close it.
2. Open the Adobe Extension Manager CS6/CC

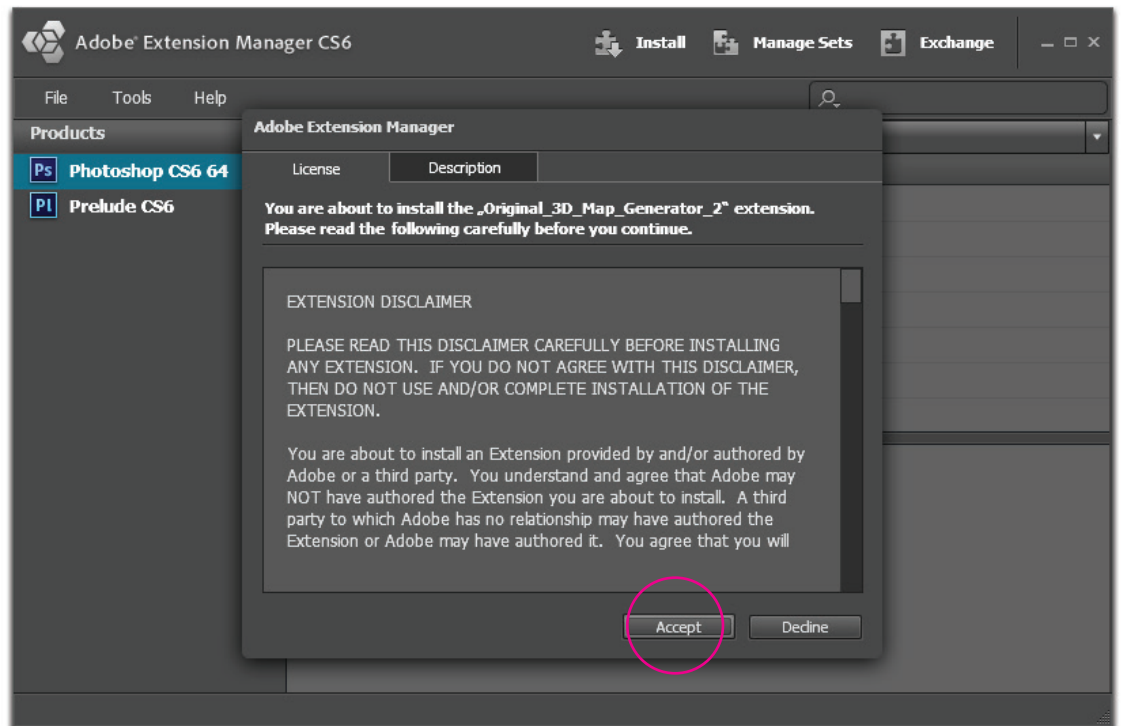


**Note:** Some Windows users may have to run Adobe Extension Manager as an administrator in order to install the extension. To do this, right click the Adobe Extension Manager icon and select "Run as administrator."

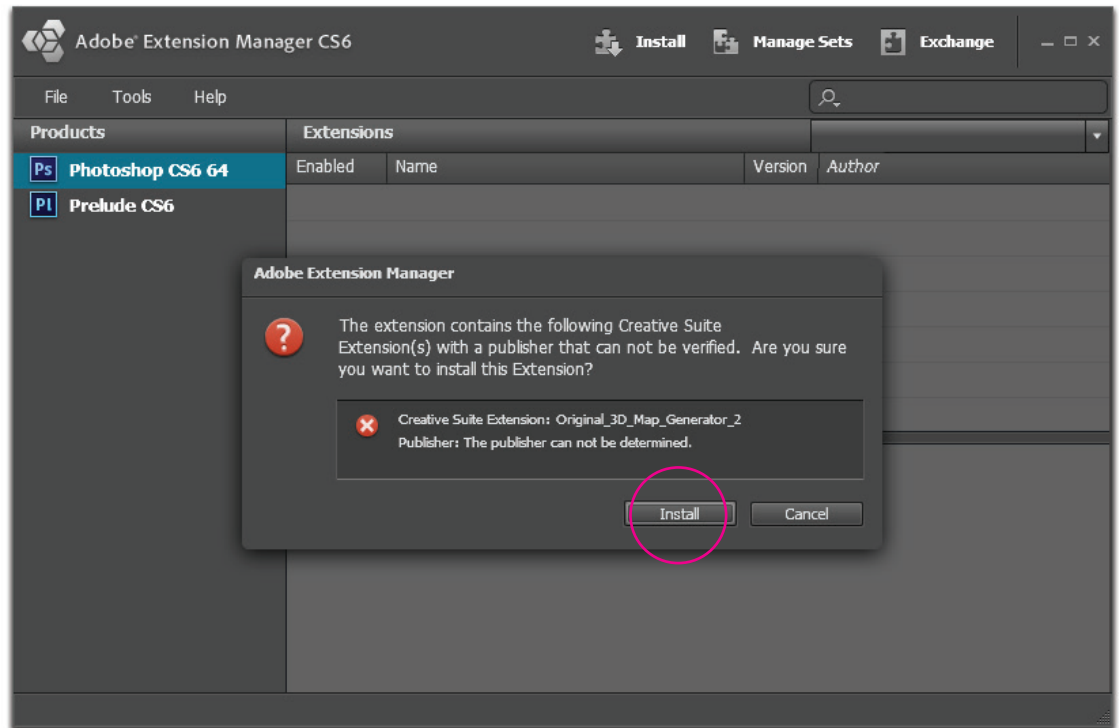
3. Click the install button and browse to the extension  
3d\_map\_generator\_2\_CS6.zxp/ 3d\_map\_generator\_2\_CC.zxp



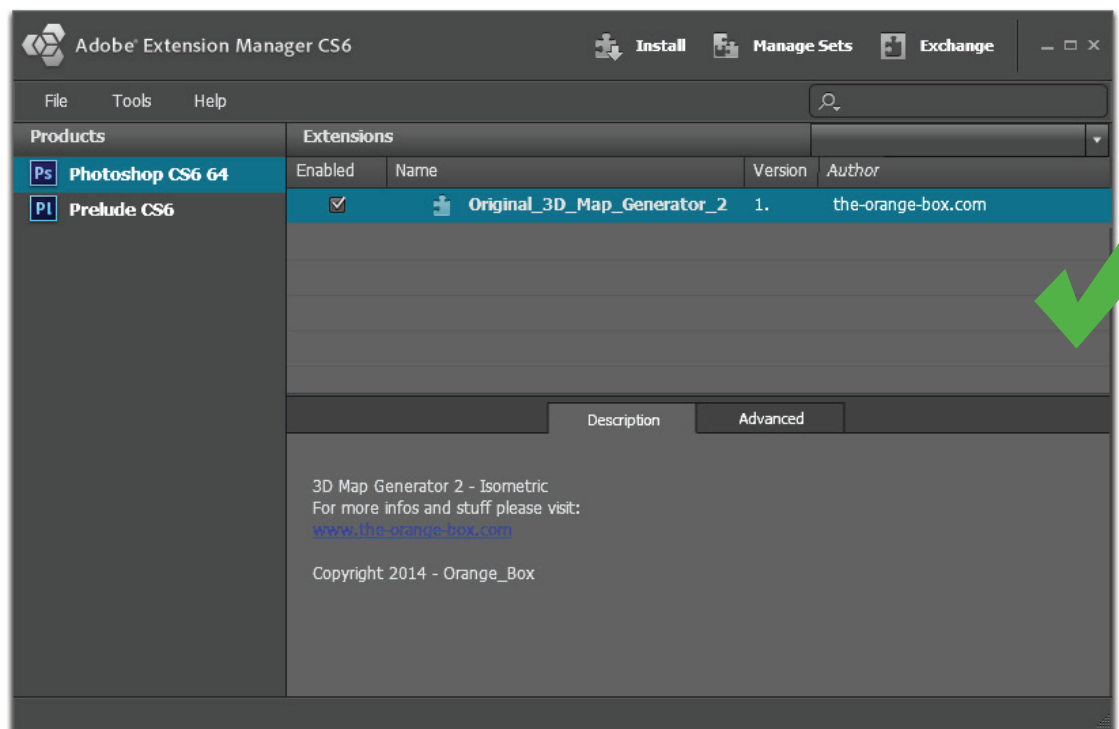
4. Follow the instructions and install the panel.



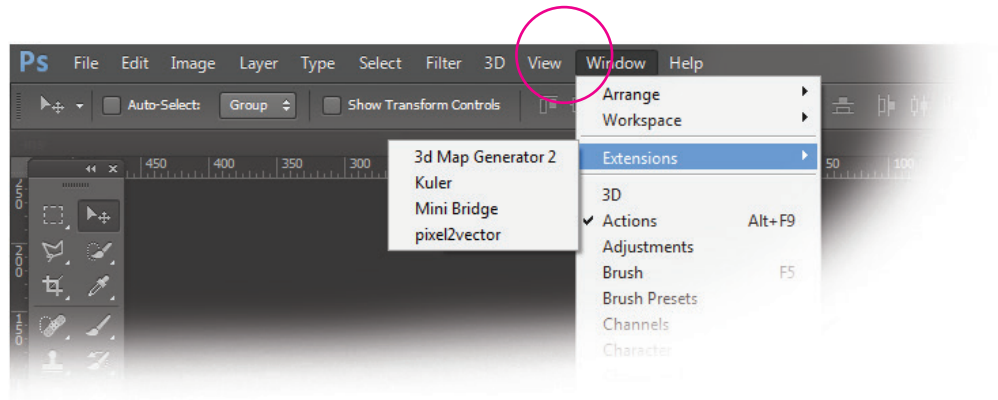
Don't worry about this alert message, just click „install“.



5. When the extension appears in the list, open Photoshop.



6. You will find the panel under  
Windows > Extensions > 3D Map Generator 2!



7. Click the „Install“ button in the panel - DONE!





### **Important**



If you are using more than one panel from Orange Box it may come to a conflict with the error message „Expected a reference to an existing File/Folder“. This is not an error in the panel but a path problem in Photoshop.

Our suggestion:

Only open the favored panel after starting Photoshop. Do you want to use another one, save your work, close the open panel and restart Photoshop. Now you can open another panel.

*Up to now we have no solution for this conflict problem. As soon as we resolve the problem, we will provide an update.*

## **Advices**

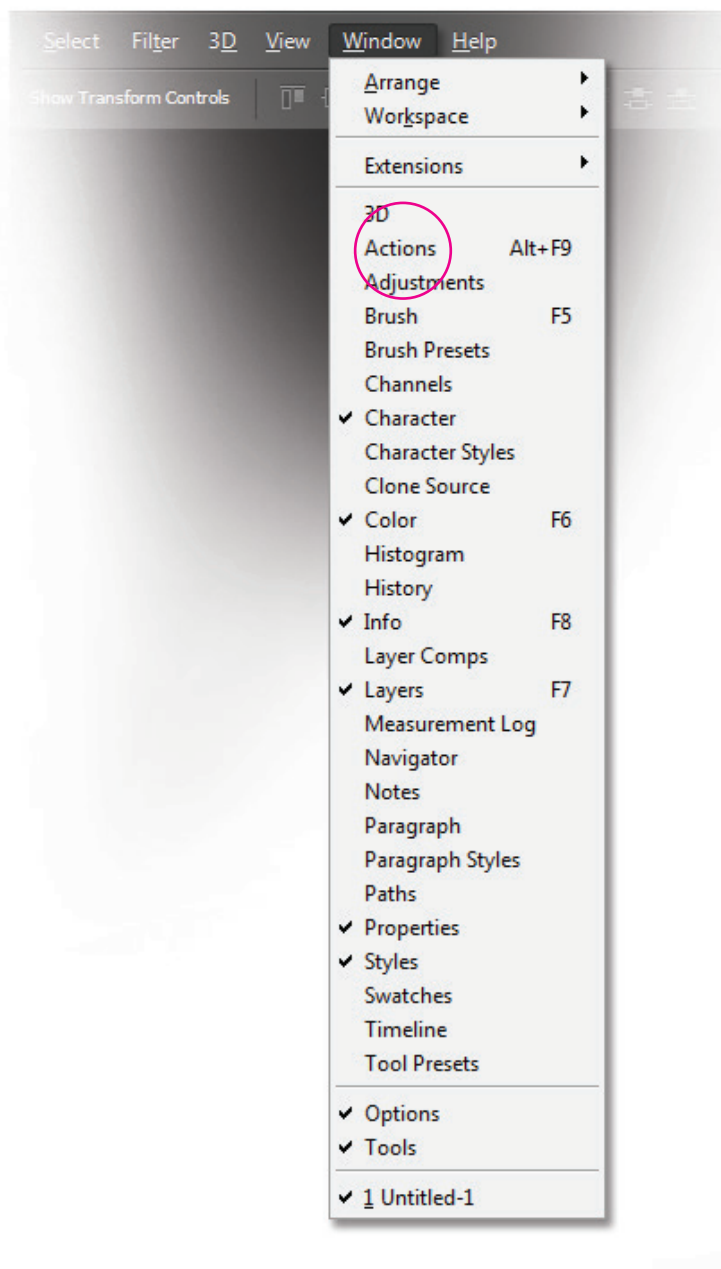
To install the panel you will need Photoshop CS6 or CC and Adobe Extension Manager.

Some Windows users may have to run Adobe Extension Manager as an administrator in order to install the extension. To do this, right click the Adobe Extension Manager icon and select "Run as administrator."

### **3D Map Generator 2 - Panel Install Instructions:**

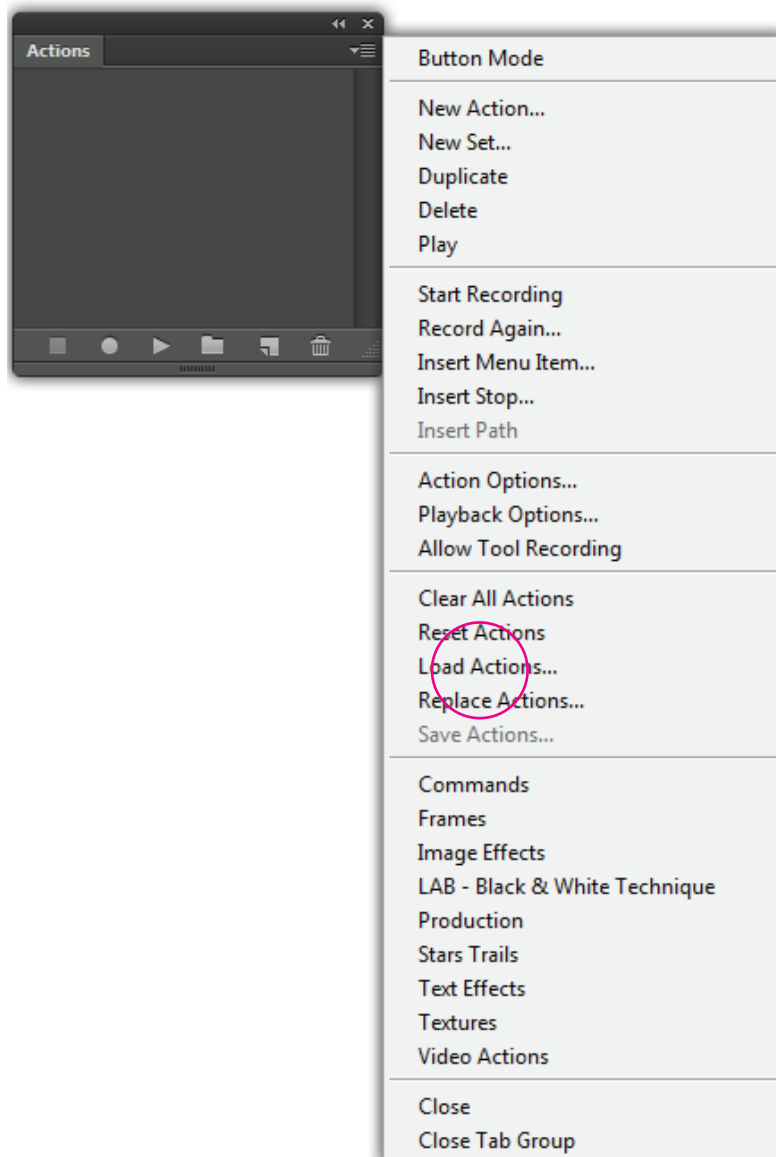
[http://youtu.be/GrQd\\_LZ27zw](http://youtu.be/GrQd_LZ27zw)

## Install the actions set



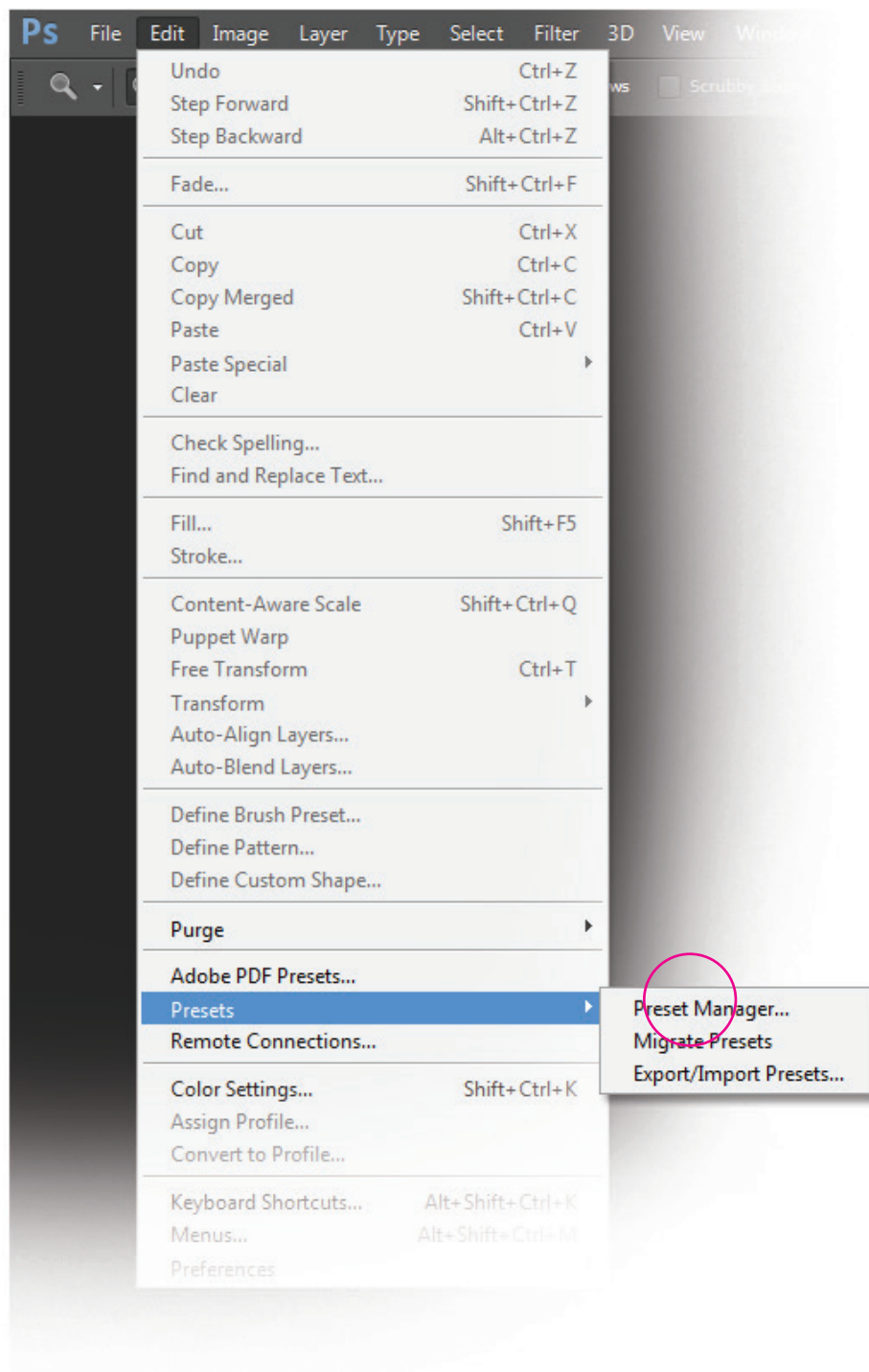
## Open the action panel

Window > Actions (Alt+F9)



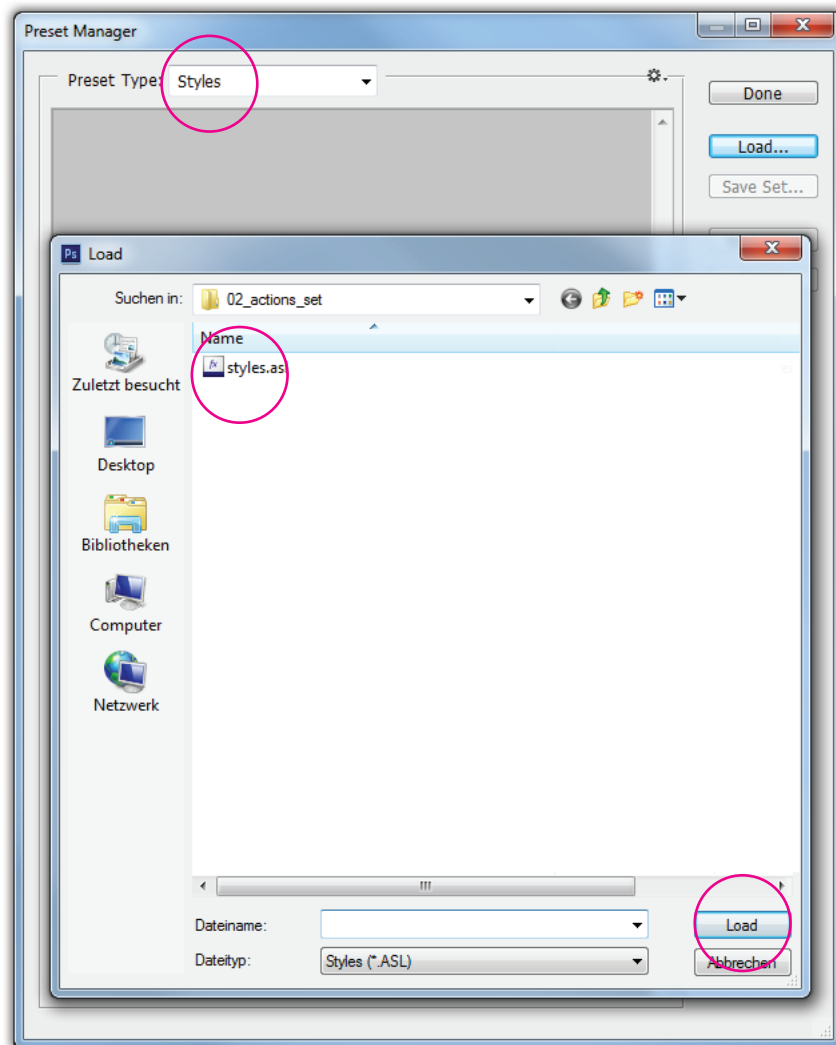
## Load the actions

Load the actions „3D\_Map\_Generator\_2.atn“ and  
“top\_layer\_designer.atn“



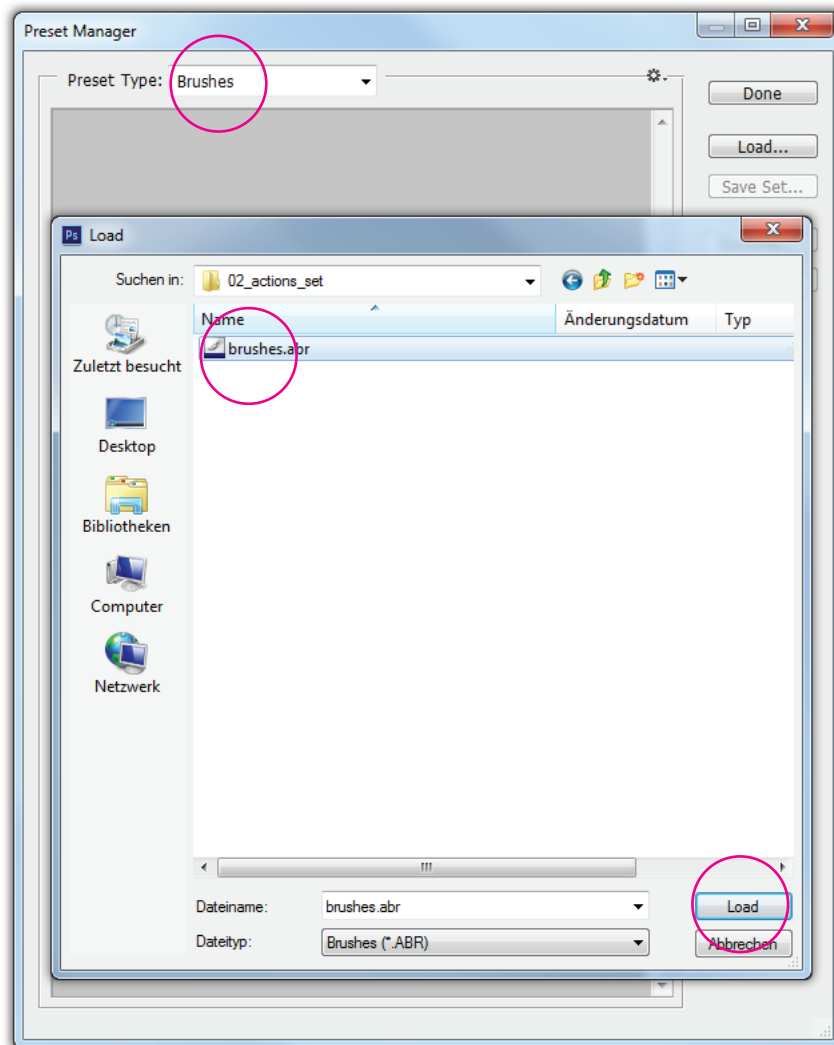
## Open the preset manager

Edit > Presets > Preset Manager...



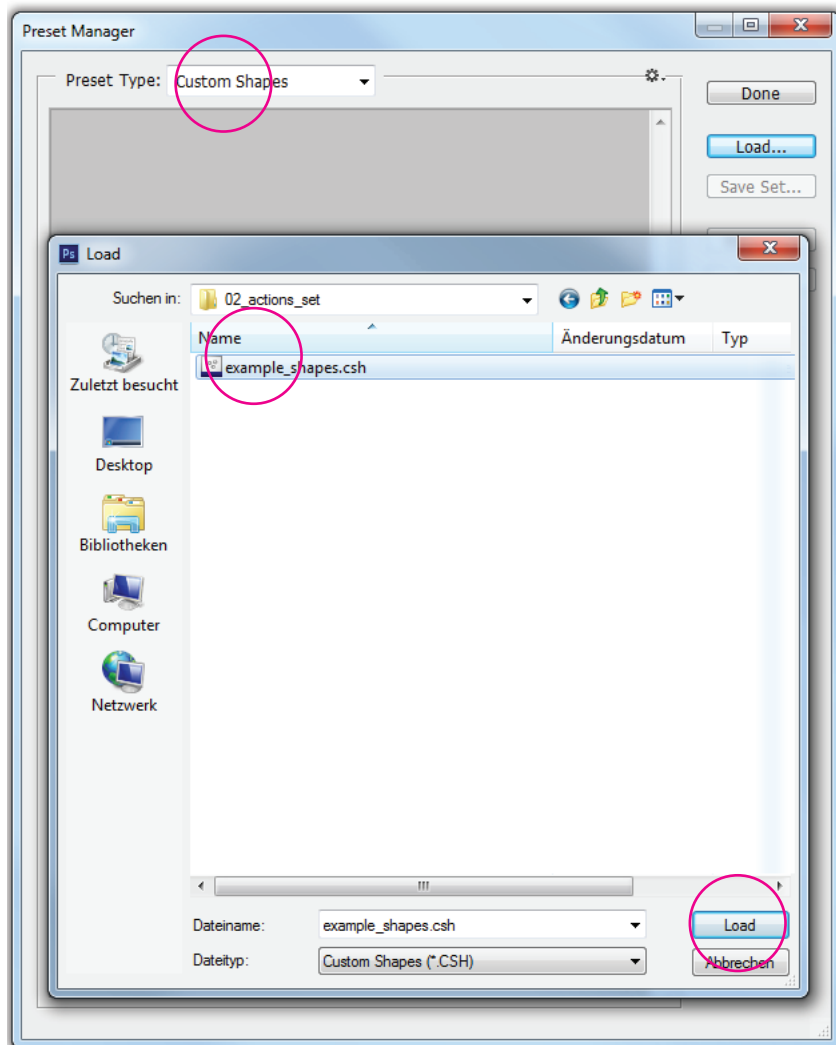
## Load the styles

Choose styles in the preset manager and load the styles.asl



## Load the brushes

Choose brushes in the preset manager and load the brushes.abr



## Load the custom shapes

Choose custom shapes in the preset manager and load the example\_shapes.csh

### 3D Map Generator 2 - Actions Set Install Instructions:

[http://youtu.be/rk91\\_bHzSx4](http://youtu.be/rk91_bHzSx4)

## Actions set overview

